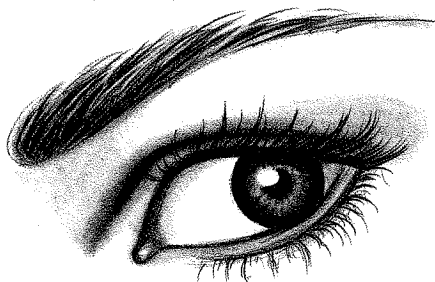
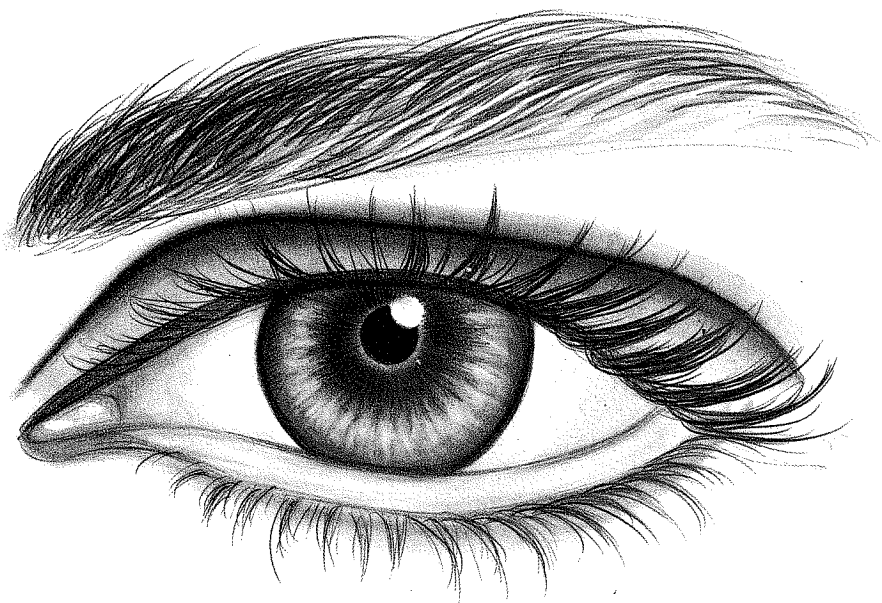


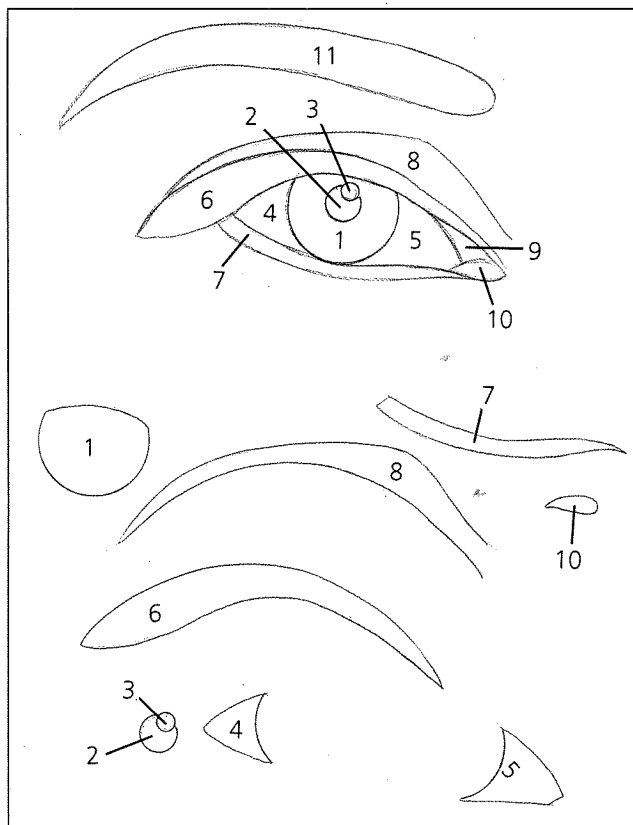
THE EYES

Eyes are beautiful! They are my favorite things to draw. An entire drawing can be made around a single eye. In the drawings below, you can see the eye is just *shapes*. An eye looks more like puzzle pieces than any of the other features. I have numbered the pieces to help you see the various parts that make up the eye.



See how this eye is looking at you from an angle? Because it is turned, you see a lot of the white of the eye on the left of the iris and hardly any on the right. Also, see the lower lid thickness below the iris? Notice that eyelashes on the bottom come off the lower line, not the one next to the eye.

Note: You will notice that the "catchlight," or flash, is *half in the pupil and half in the iris*. No matter how many catchlights you see in your photo, your drawing will look better if you only use *one in each eye*, and placed in that position. This is the only time I stress "cheating," by *not* drawing what you see. (Artistic license!)



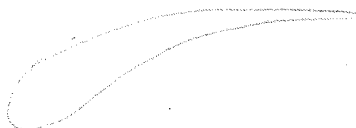
1. Iris
2. Pupil
3. Catchlight (or flash)
4. & 5. White of the eye
6. Upper lash line
7. Lower lip thickness
8. Upper eyelid
9. & 10. Corner eye membrane (tear duct)
11. Eyebrow

All of these shapes can be seen above in the line drawing of the eye. Try very hard not to look at the eye as one difficult shape, but instead as eleven easy shapes.

EYEBROWS AND LASHES



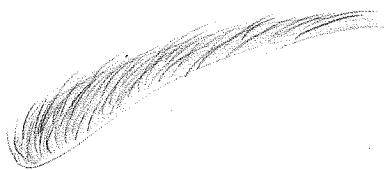
The line on the left looks hard and straight. The line on the right is softer and curved. It was drawn with a *quick* stroke. Flick your wrist and the line will become thinner on the end.



Eyebrows can be large or small, thick or thin. Just draw the overall shape first.



Start to apply little hairs. Look at the direction they are growing in the picture and apply your pencil lines in that direction.



Continue to draw hairs until they start to fill in, and then take your tortillion and blend the whole thing out.



Add hair strokes again, until it gets as dark as you want it.



To soften it a bit, take your kneaded eraser, put it into a point, and with the same quick strokes, lift some light hairs out. It is this finishing touch that really helps make it look real.



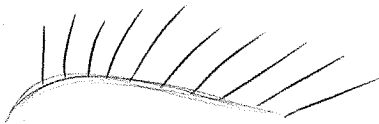
Never just fill in the eyebrow with heavy dark pencil lines.



This is better, but the lines still look harsh and too straight.



These lines work. They are curved and tapered at the ends, more like hair really is.



Eyelashes should not be drawn with hard lines either. These lines are much too hard and straight.



This is the way eyelash lines should be drawn, but eyelashes don't grow in single lines like this.



Eyelashes grow in clumps like this. Watch which direction they curve



Don't ever draw a line all around the eye with lower lashes like this.



This is what lower lashes should look like. They come off the bottom of the lower lid thickness and are shorter than the upper lashes. See how some of them are shorter than others? They, too, grow in bunches.